

Alex Hajdasz

SENIOR UX DESIGNER

PORTFOLIO SNAPSHOT

Enhancing existing solutions

(Image: PebblePad, 2021)

Here I redesigned PebblePad's **evidence blocks** to provide a clearer view of student work needing approval.

Students and academics appreciated this because their workbooks are often very large, which made reviewing evidence far less time-consuming.

The screenshot displays the PebblePad interface with three evidence blocks and a feedback panel on the right. The blocks are: 'Analytical skills' (rated 4), 'Specialist knowledge' (rated 4), and 'Articulates and adopts a principled approach to care' (rated 3). Each block has a 'Still developing' label, a progress bar, and icons for adding evidence, attachments, and comments. A red box highlights the attachment icon in the 'Analytical skills' block, with a red arrow pointing to it and the text 'Students attach evidence here'. Another red box highlights the green checkmark icon in the 'Articulates and adopts a principled approach to care' block, with a red arrow pointing to it and the text 'Approved blocks light up green to tell students which of their skills have been approved by an assessor'. The feedback panel on the right has a 'FEEDBACK' tab and a 'COMMENTS' tab. It shows the text 'Articulates and adopts a principled approach to care' and a 'Select approval status' dropdown menu with the option 'This capability requires more evidence'. A red box highlights the dropdown menu, with a red arrow pointing to it and the text 'Assessors review a student's work on the left before choosing an appropriate approval level here'. The feedback panel also has a 'Justification (optional)' text area, an 'Add attachments' button, and 'Save & release', 'Cancel', and 'Save' buttons.

Analytical skills
Identifies and selects current techniques and procedures or methods while undertaking analytical tasks.

Still developing 1 2 3 4 5 Succeeding

+ Add ... 3 3 1

Students attach evidence here

Specialist knowledge
Identifies general and specialist knowledge developed in the workplace in order to carry out activities.

Still developing 1 2 3 4 5 Succeeding

+ Add ... 1 2 0

Articulates and adopts a principled approach to care
Outline mitigation methods used to minimise the operational impact of Sustainable Development and/or Environmental Requirements. Identifies a positive and negative impact on Sustainable Development and Environmental Requirements.

Still developing 1 2 3 4 5 Succeeding

+ Add ... 1 1 0

FEEDBACK COMMENTS

Articulates and adopts a principled approach to care

Select approval status

⊖ This capability requires more evidence

Justification (optional)

+ Add attachments

Save & release Save Cancel

Assessors review a student's work on the left before choosing an appropriate approval level here

Approved blocks light up green to tell students which of their skills have been approved by an assessor

Enhancing existing solutions

(Image: PebblePad, 2018)

This early project needed me to understand the existing visual identity of PebblePad whilst **taking ownership** and directly **challenging older design patterns**.

This feedback panel presents assessor comments in a timeline that can be filtered for more efficient use. It tested well with users, and has maintained its enhanced look ever since.

The image shows a screenshot of the PebblePad interface, which is a digital portfolio system. The main content area displays three competency areas, each with a progress indicator and a set of icons for adding, editing, and deleting items.

- Analytical skills**: Progress indicator shows 'Still developing' with a rating of 4 out of 5. Icons for adding, editing (3), deleting (3), and commenting (1) are visible.
- Specialist knowledge**: Progress indicator shows 'Still developing' with a rating of 4 out of 5. Icons for adding, editing (1), deleting (2), and commenting (0) are visible.
- Articulates and adopts a principled approach to care**: Progress indicator shows 'Still developing' with a rating of 3 out of 5. Icons for adding, editing (1), deleting (1), and commenting (0) are visible.

On the right side, a 'Feedback' panel is open, showing a timeline of comments from assessors. The panel includes a search bar, filters, and a dropdown for the month of November 2024. Two comments are visible:

- Dominique Hart** (at 15:55, 27-Nov-2024): Released. Comment: 'Met with Joanna to complete final MPAF. Joanna is an enthusiastic student who has made the most of the learning opportunities as they have presented.' Below the comment is a 'Record of Hours (Signed off)' button and a 'Reply' link.
- Heidi Wilson** (at 15:23, 18-Nov-2024): Released. A 'CAPABILITY APPROVAL' badge is shown, indicating 'This capability meets all requirements'. The comment text reads: 'This is a good start to your E-portfolio, Joanna. Please see my comments within your entries. More detail required in history/risk factors for both preg. care and P/N care. Well done overall, Joanna. You appear to be engaging well with your clinical placement and your course.' Below the comment is a 'Reply' link.

Fully documented user interface design

(Image: PebblePad, 2023)

I redesigned this
workspace overview table
to provide a way for admins
and tutors to easily review
their data in one intuitive
place.

Search for a region or workspace

800px

6 results found.

Region name ↓	Managers	Status	Workspaces
▶ Education Society for Medicine Region associated with medical studies and science.	Jaclynn Bradley	● Active	254
▼ Faculty of Civil Engineering Region associated with engineering studies.	Heidi Wilson Evelyn Shields +1 more	● Active	11
Workspace name ↓	Managers	Status	Members
AVH Civil Engineering (23/24) Course material for the engineering course.	Heidi Wilson Evelyn Shields	● Active	2310
Oral Presentation Course material for the engineering course.	Heidi Wilson Evelyn Shields +1 more	● Active	48
Test workspace for Engineering (1) A place to trial new learning materials related to the c ...	Dominique Hart	● Active	1723
Test workspace for Engineering (2) A place to trial new learning materials related to the c ...	Dominique Hart	● Setup	

719px

257px

270px

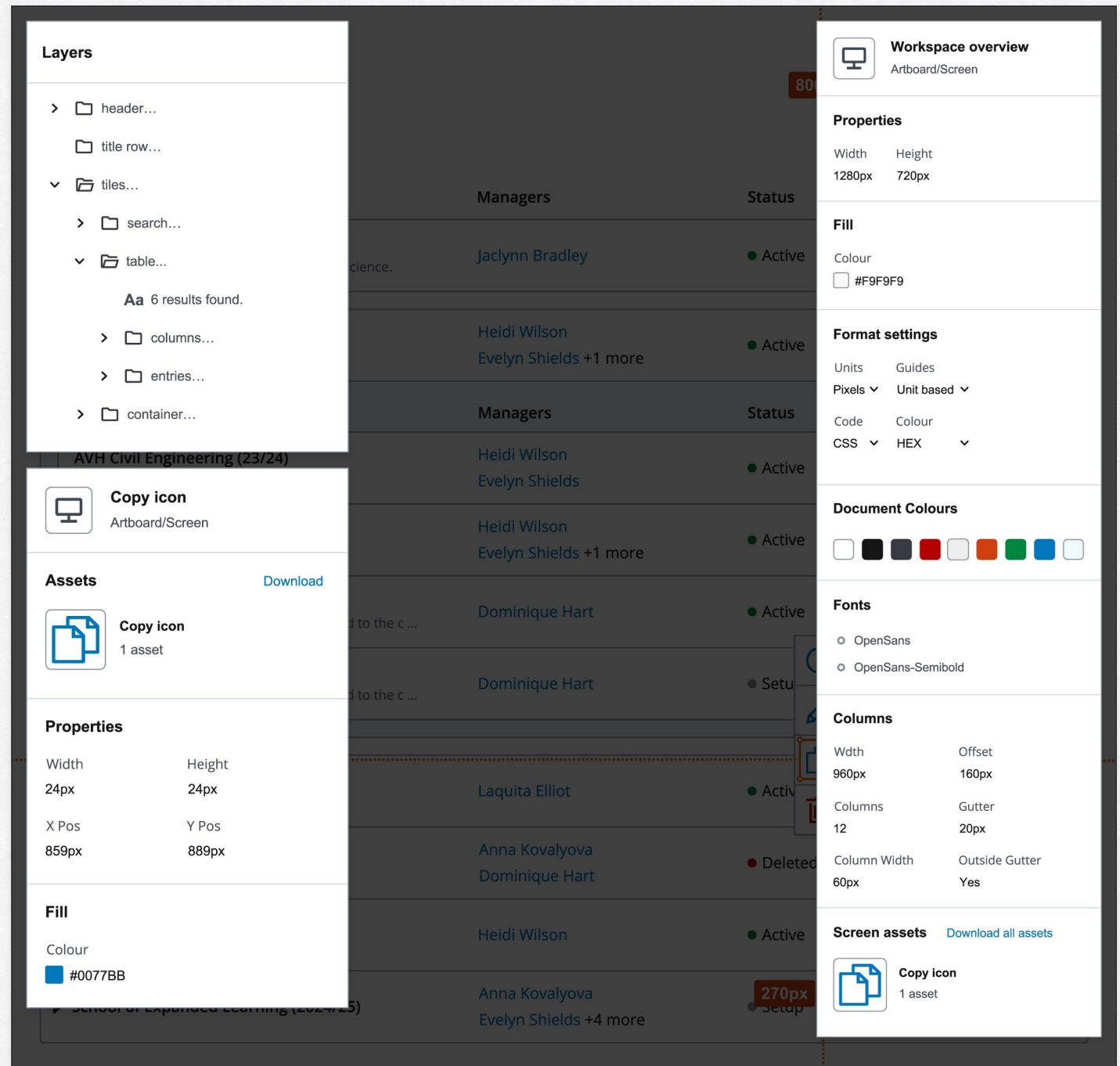
▶ Faculty of Business Management Region associated with business studies.	Laquita Elliot	● Active	
▶ GSE Courses (2024/25)	Anna Kovalyova Dominique Hart	● Deleted	376
▶ School of Applied sciences Region associated with scientific studies.	Heidi Wilson	● Active	400
▶ School of Expanded Learning (2024/25)	Anna Kovalyova Evelyn Shields +4 more	● Setup	8

Fully documented user interface design

(Image: PebblePad, 2023)

This overlay to the previous shot contains a sample of the handoff data I provide to the engineering teams.

I take a **pixel-perfect approach** here to ensure the teams achieve consistent layouts using shared design components (all tested with end users).

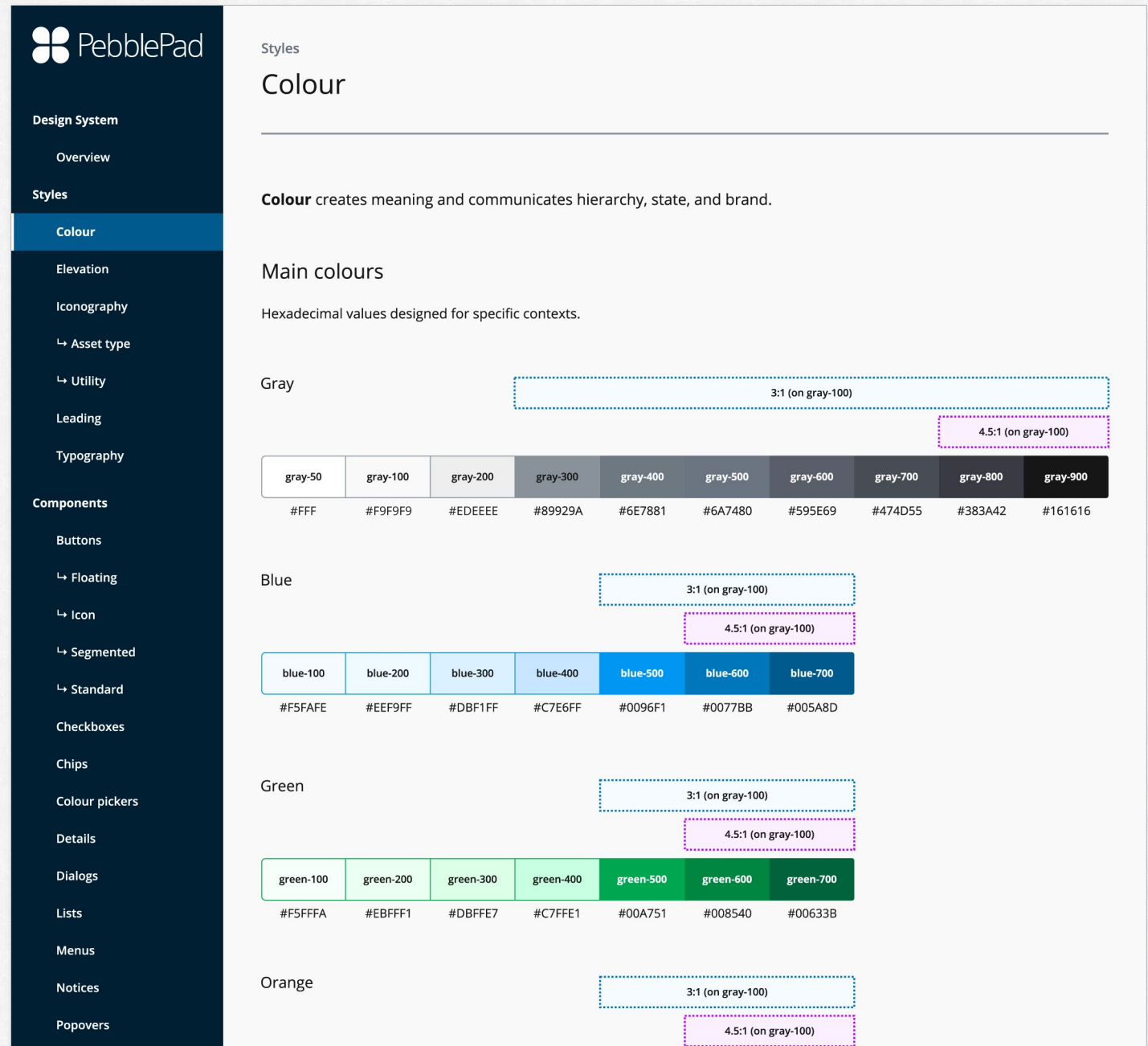


Design leadership

(Image: PebblePad, 2020)

After joining PebblePad, it wasn't long before I began building my own **design system** for it.

We've since digitised this document and made it a developer resource to help us achieve consistent, accessible, and beautiful looking services.



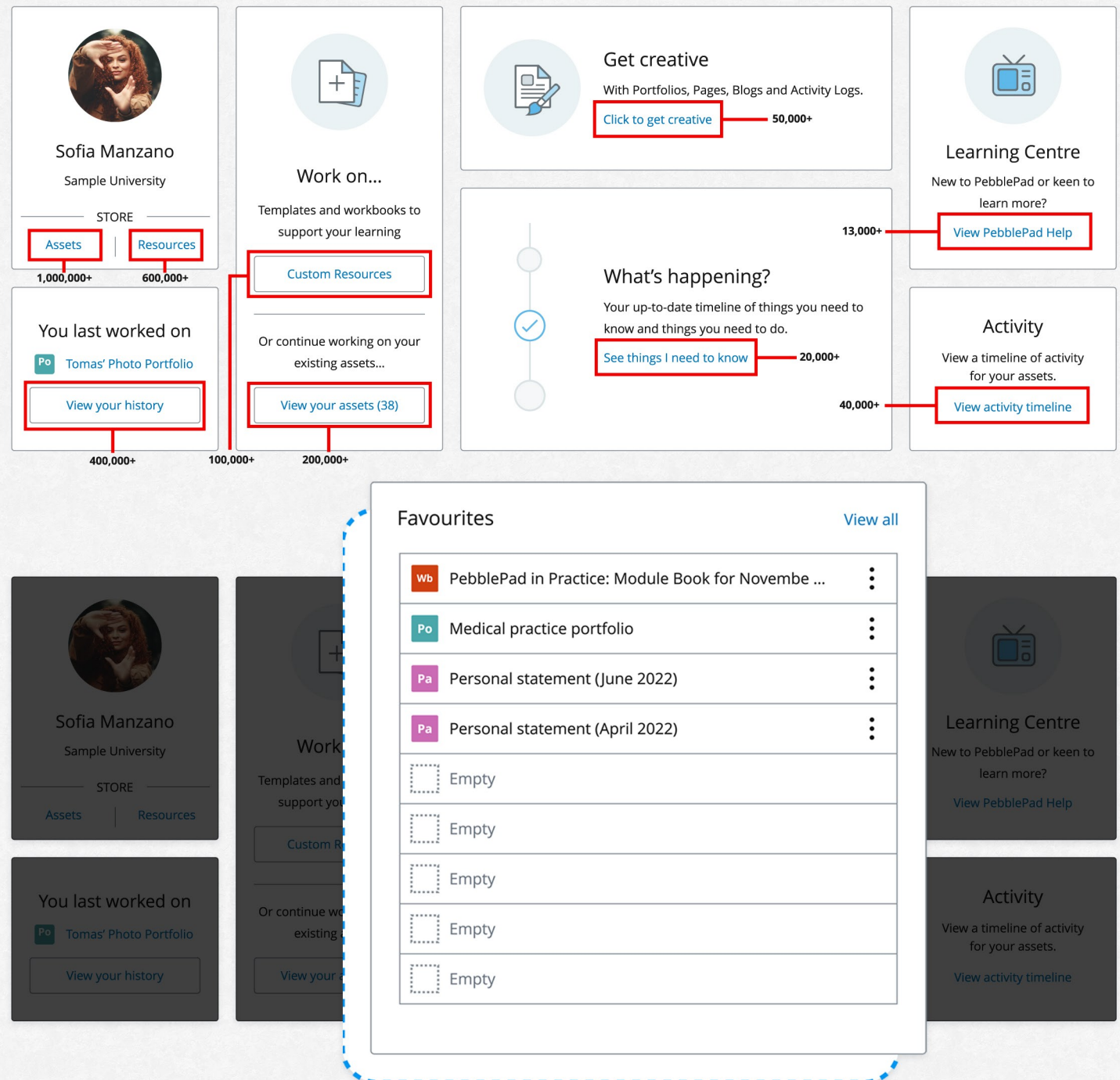
Data-driven enhancements

(Image: PebblePad, 2023)

Data was crucial in creating this **Favourites** panel.

Navigation is an important UX theme in PebblePad, so adding a feature for users to pin their most-opened files to their dashboard was a big win.

We used click data to find out which dashboard tiles were rarely used and from that which ones we could safely replace.



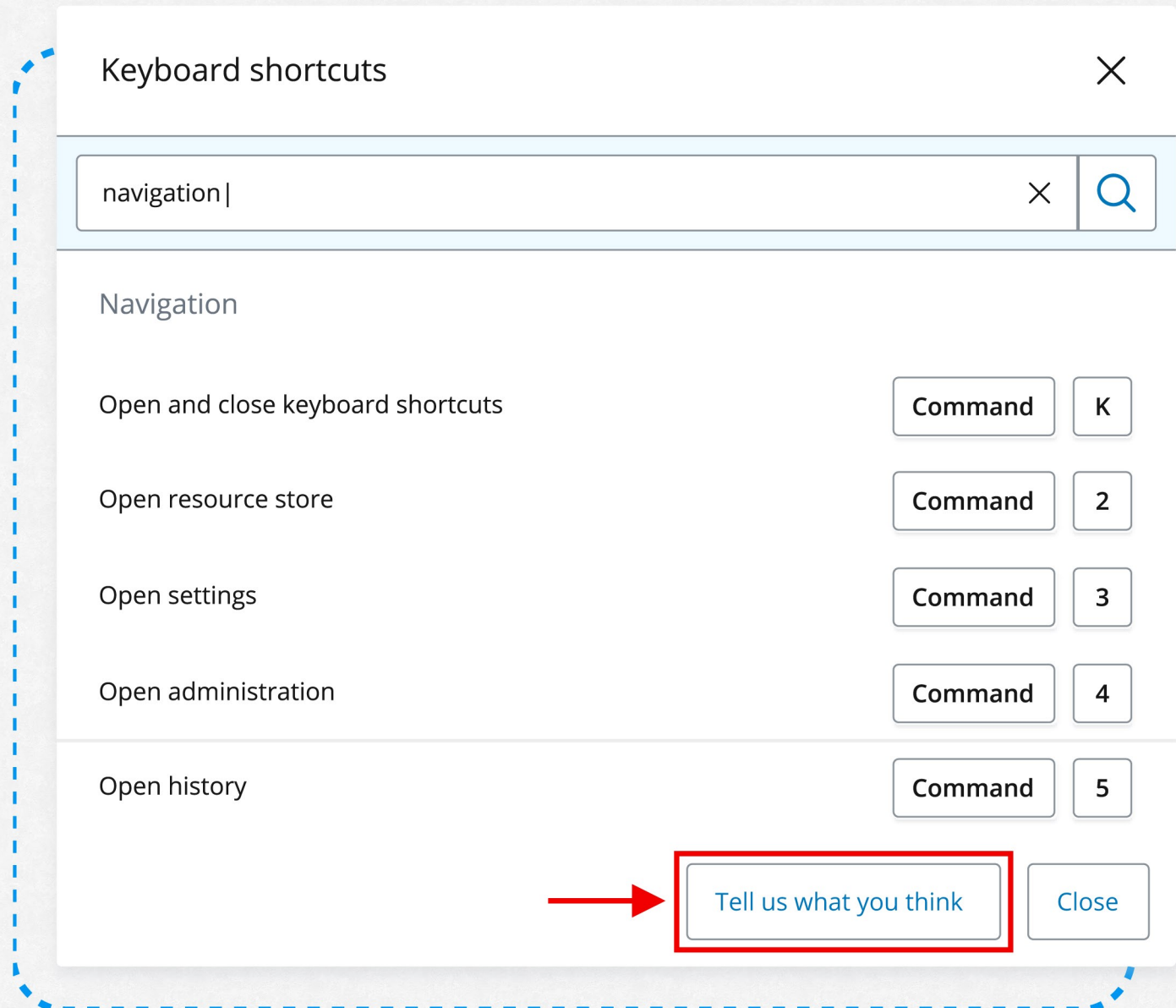
Data-driven enhancements

(Image: PebblePad, 2024)

Capturing user feedback is easier when those same users have contextual prompts in a workflow.

This example I pushed for appears in an accessible **Command Menu** I designed which allows users to quickly jump across pages.

The “tell us” button links to a satisfaction survey tracking what users liked about the new feature.




User research and design

(Image: PebblePad, 2022)

A sample **Persona** like the ones I created for PebblePad.

These valuable developer aids act as a container for the months of research data I collected during interviews with PebblePad’s user base.



"This new interface we use to upload our assignments has so many bugs!"

Age 21
Role Photography student

Attributes

TECH LOVER

NEEDS SUPPORT

FRUSTRATED

TIME POOR

SOCIAL

REFLECTIVE MINDSET

MOTIVATED TO SUCCEED

Sample persona

Sofia the Student

About

Sofia is a photography student who attends a major university. She's been interested in cameras ever since she was a child and in later years, became interested in a career in photography. Throughout high school Sofia won numerous prizes in photography competitions, and she's now studying to earn a degree in photography, with an eventual goal of becoming a professional photographer.

Goals

Sofia want to pass her university assignments before graduating. After this Sofia is concerned with getting a well-paid job, with the ultimate goal of making enough money to support her desired career as an independent photographer.

Needs

- I need constant feedback and support from my university professors.
- I want a good work-life balance with opportunities to socialise more.
- I need a quality telephoto lens for taking the best shots.

Frustrations

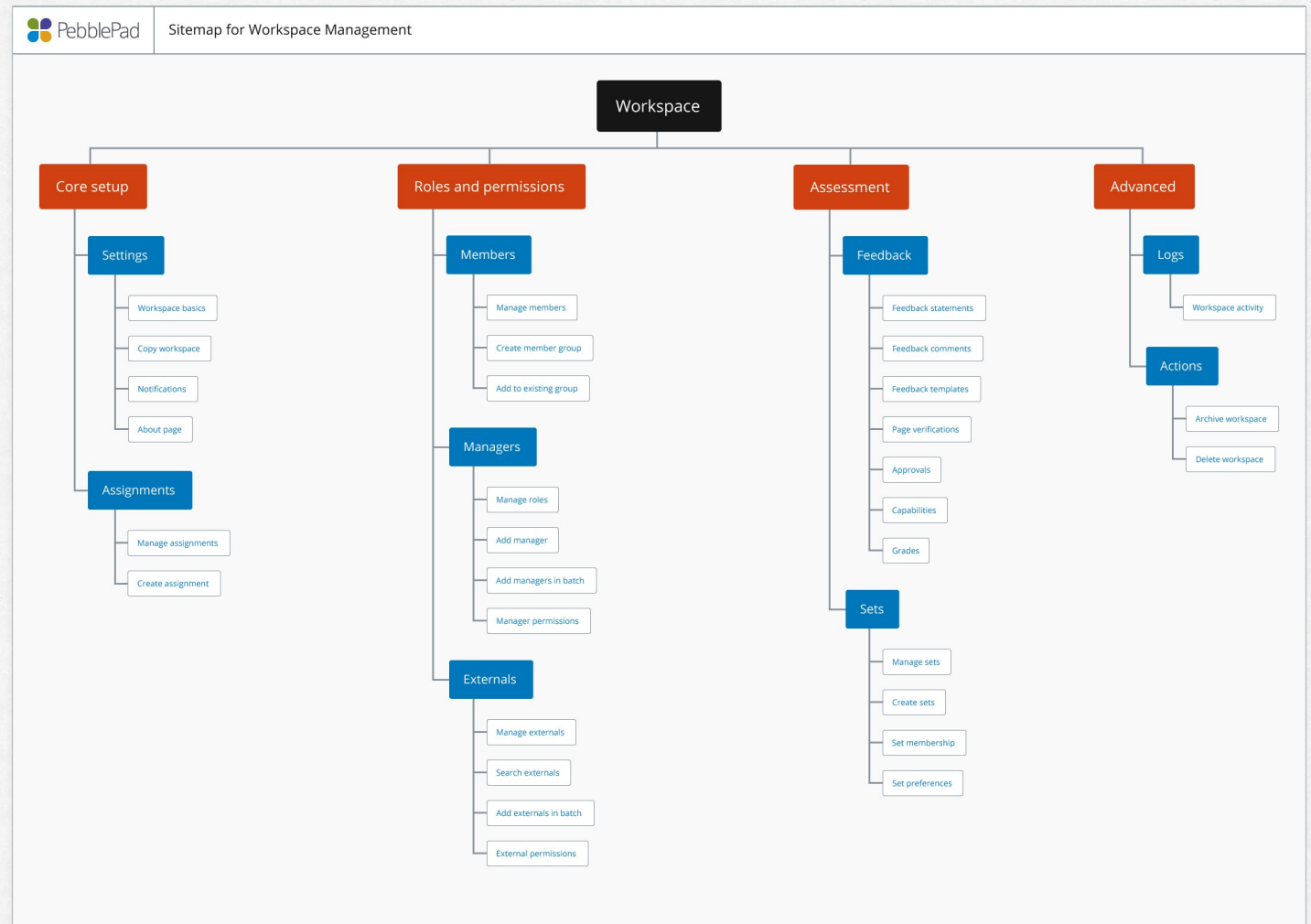
- I sometimes don't understand what my assingments are asking from me.
- Prospective employers are asking for years of experience I don't have!
- The lighting rigs in the university labs don't give me the best results in my photo shoots.

User research and design

(Image: PebblePad, 2023)

A sample **site map** I made for an assessment area.

This visual (alongside multiple **user flow** diagrams) helped the Product Team understand the existing navigation structure of areas we wanted to improve.



Gap analysis

(Image: PebblePad, 2022)

A sample screenshot from a **gap analysis** exercise I undertook alongside a Product Manager to understand the **cross-platform** capabilities of competing software.

This allowed us to benchmark our software’s capabilities and present those findings to stakeholders in one easy to understand visual.

Competitor	API			Third Party Integrations		
	Management APIs scope	Statistical data	Plagiarism checker	Data import	External services	Microsoft Teams
Company 1	Basic			✓	✓	
Company 2	Extensive	✓	✓			✓
Company 3	Extensive	✓		✓		
Company 4	N/A					
Company 5	Extensive	✓	✓		✓	✓
Company 6	Basic	✓	✓	✓	✓	✓
Company 7	Extensive	✓	✓	✓	✓	
Company 8	Basic	✓		✓	✓	✓
Company 9	Basic				✓	

User testing

(Image: PebblePad, 2023)

I've done all sorts of **user testing** for PebblePad.

From 1:1 user interviews remote and in-person, to quantitative activities like automated feature tests.

Submission details

Modified
12-Feb-2024 at 11:21

Submitted
3-Feb-2024 at 15:33

Created
25-Jan-2024 at 09:00

Hours
15 hours, 35 minutes

Points
0 points

Authors

Users who have permission to edit this submission.

Lisa Noboa

Latisha Elliot

Carmen Beltran

Rachel Bradley

Jennifer Reynolds-Ling

Signed by

Users who signed a digital signature block anywhere in this submission.

Lisa Noboa (lisa.naboa@pebblepad.co.uk)

Wenyan Wu (wenyanwu2003@unitedassessmentcollege.co.uk)

Susan Richards

Rita Simmons (rita.simmons@pebblepad.co.uk)

February 2024

Lia Applen

at 09:11, 12-Feb-2024

Released

Met with Lisa to complete final MPAF. Lisa is an enthusiastic student who has made the most of the learning opportunities as they have presented.

Lisa is participating and assisting with cares and performs skills with guidance. She can explain some rationales underpinning practice and asks appropriate questions and seeks help appropriately.

For future development Lisa can develop her confidence with providing information and assistance to women. Lisa is caring with the women and professional at all times. Good work.

Reply

January 2024

Jaclynn Bradley

at 15:55, 27-Jan-2023

Unreleased

CAPABILITY APPROVAL

This capability needs more work before it can be approved. Please see your tutor.

This is almost there but not quite. You need to pay more attention to the content of your reflection. Let's review again soon.

Timesheet-1.png

Jump to block

Test participant

Recording by Test Participant

Properties

Name
Test participant

Date
Mon 29 Apr 2024 - 2:49

Email
test.participant@pebblepad.com

Webcam
Enabled by participant

Microphone
Enabled by participant

Hardware

Model
Screen

Firefox
1280x686

OS
Windows (10)

Summary

Duration
7:47

Missclicks
59%

Screens
14

Hit Goal
n/a

Screen

Duration
0:33

Missclicks
0

Name
Submission Viewer (2A)

Submission Viewer (1A)

Submission Viewer (1B)

Submission Viewer (2A)

AVH Medical Science Skills Workbook

Lisa Noboa

1 of 12 submissions

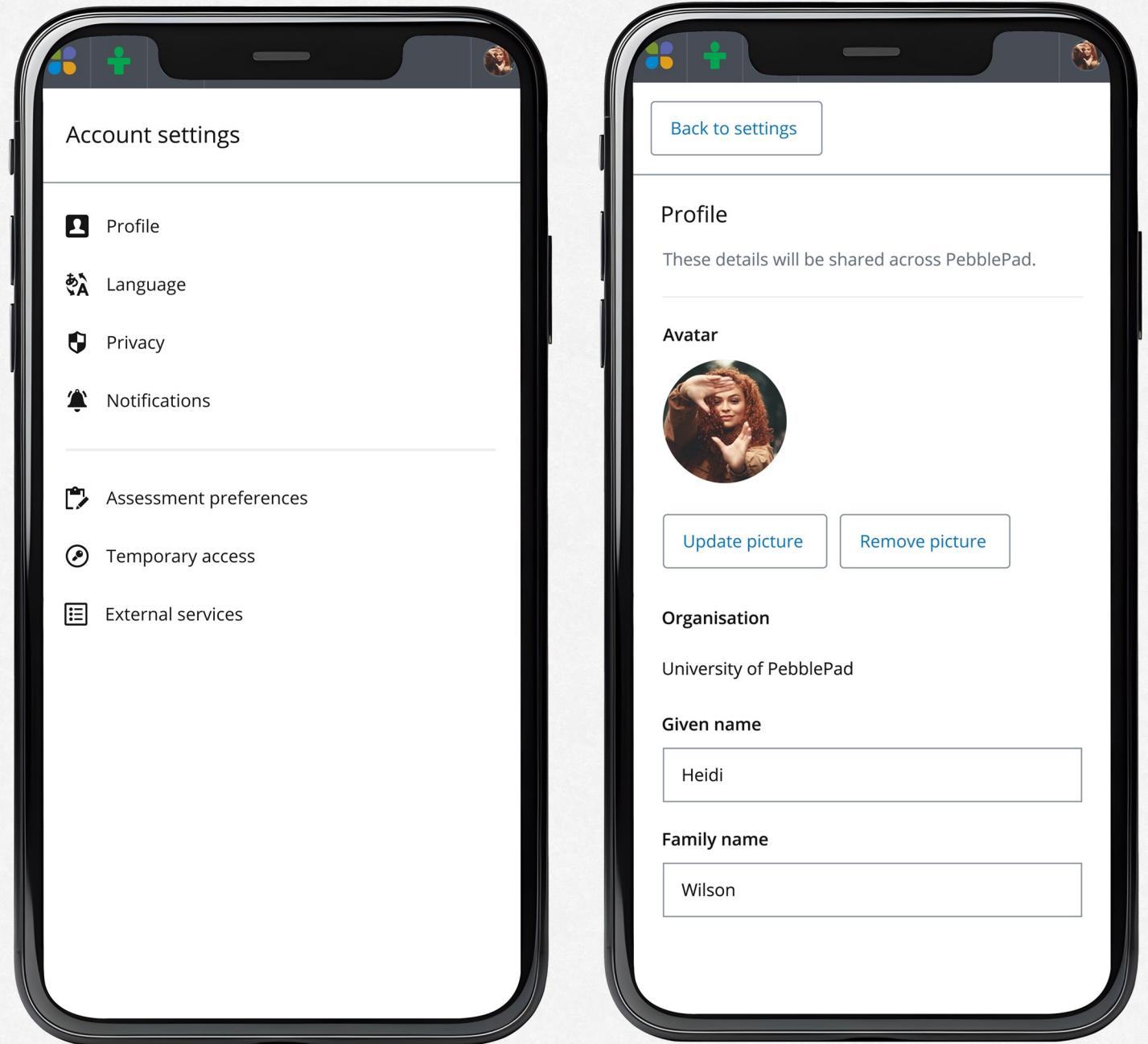
0:00 / 7:47

Responsive design and design for apps

(Image: PebblePad, 2024)

I've been designing
responsive layouts for a
long time.

This example is from a
recent project which
collects PebblePad's **user
account settings** into one
place.



Responsive design and design for apps

(Image: PebblePad, 2021)

A **responsive** design for a **cross-platform app** produced by PebblePad.

PebblePocket allows students to record their educational reflections on their phone.

This new feature (which I live tested at conventions) let users tag their experiences for easier filtering and evidencing purposes.

